



Remembering Our Founder,  
**Capt. Himanshu Marwaha**  
on his Birthday.  
**27-05-1982**

As we remember Capt. Himanshu Marwaha on his birthday, we honor his enduring legacy, leadership, and the lasting impact he made on all those who had the privilege of working with him. His dedication, professionalism, and spirit continue to inspire us. May his memory live on in our thoughts and in the values he upheld throughout his career.

## CHM Global LLC

Office No. 6, Ground Floor, Building No. 1, Financial Square, C-Ring Road, Doha, Qatar  
24x7: +974-50112300 | Tel: +974-4417 9000 | Fax: +974-4481 2429  
Email: [info@chm-global.com](mailto:info@chm-global.com) | Website: [www.chm-global.com](http://www.chm-global.com)



# Monthly Highlights – March Edition

## Steady Progress, Shared Success

May was a month of dedication and forward momentum. By working together and remaining adaptable, we continued to overcome challenges and contribute toward shared achievements.

### Mother's Day May 10

Mother's Day is an opportunity to recognize and appreciate the invaluable contributions of mothers and maternal figures. It celebrates their dedication, strength, and the positive impact they make within families and communities.



### International Day of Families May 15

International Day of Families emphasizes the importance of strong family foundations in shaping healthy communities and societies. It serves as a reminder of the role families play in fostering support, unity, and well-being.



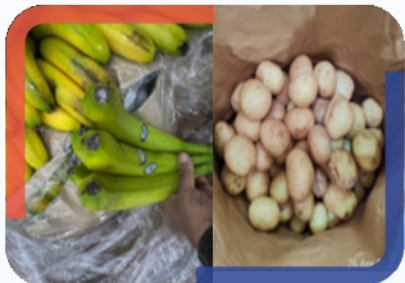
### Eid al-Adha May 27

Eid al-Adha, also known as the Festival of Sacrifice, reflects values of compassion, gratitude, and generosity. The occasion brings communities together through prayer, reflection, charitable giving, and shared celebrations with family and friends.



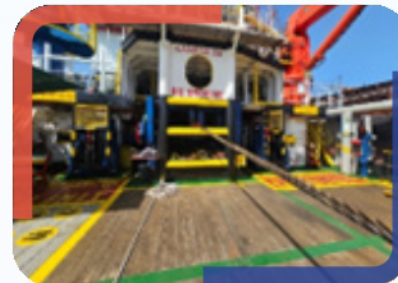
In this edition, we provide key updates across our Survey, Project, and Offshore divisions, highlighting critical operations, inspections, and ongoing projects. Explore the latest insights and accomplishments that reinforce our commitment to safety, quality, and operational excellence.

## SURVEY SPOTLIGHT



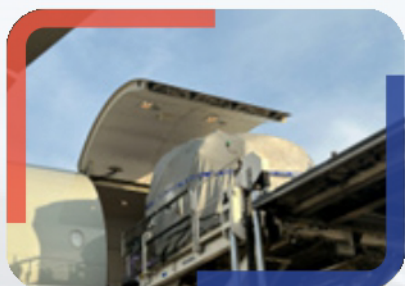
### Cargo Damage – Banana & Potato

A banana and potato consignment was inspected, and visible signs of spoilage, including discoloration, softening, and localized deterioration, were observed despite acceptable temperature readings at the time of survey. This suggested that a prior break in the cold chain or improper storage/handling conditions had likely occurred during transit or storage. The damage indicated progressive quality deterioration due to earlier temperature fluctuations and inadequate environmental control. Continuous temperature monitoring, proper ventilation, and strict cold chain management were recommended to minimize further deterioration and preserve cargo quality.



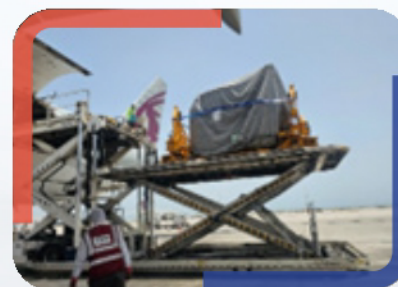
### Towage Inspection

Towage operations of tugs and barges were successfully executed under strict safety protocols and precise operational coordination. Comprehensive inspections were conducted to ensure the reliability and efficiency of the towage, including verification of towing equipment such as lines, winches, and hooks. The condition of the tugs and barges was thoroughly assessed to identify any wear or damage, ensuring optimal performance and safety throughout the operation.



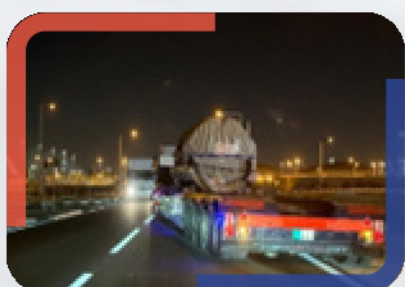
### Flight Engine Import

Discharge monitoring was conducted for the nominated cargo — one Engine shipped in three packages, including the Fan Case with Stand, Storage Kit, and Engine Core with Stand. The cargo was safely discharged at Hamad International Airport, Qatar, with all operations carried out under strict handling protocols and safety standards.



### Flight Engine Export

Load monitoring was performed for the nominated cargo, one Engine shipped in three packages. The operation encompassed safe loading at Hamad International Airport for its voyage. The scope included supervision of cargo handling and securing processes, strict adherence to safety and handling standards, and reporting of any damage or incidents observed during the operation.



### Engine Road Movement

The operation required detailed route surveys, load calculations, and coordination with to ensure safe transit. Escorts and traffic management were arranged to handle oversized cargo and minimize disruption. Strict safety measures were followed throughout the movement to prevent damage to the engine and surrounding infrastructure.



### Gas Free Inspection

Gas-free inspection is a crucial safety procedure conducted onboard vessels to ensure that confined spaces, such as cargo holds, tanks, and decks, are free from hazardous gases before personnel entry. This inspection is essential for preventing accidents, protecting workers, and maintaining a safe working environment. During a gas-free inspection, trained professionals check the air quality within these spaces, ensuring there are no dangerous gas concentrations such as flammable, toxic, or oxygen-deficient gases.



### Cargo Damage – Meat

A meat consignment was inspected, and signs of cargo damage and product deterioration were observed, including compromised packaging and evidence of temperature-related spoilage. The condition suggested a possible prior break in the cold chain during transit or handling, leading to progressive deterioration. Strict temperature control and proper cold chain management were recommended to prevent recurrence.



### Cargo Damage – LDPE

An LDPE cargo consignment was inspected, and cargo damage was observed, including torn packaging and contamination of material in affected areas. The damage appeared consistent with improper handling, storage, or transit conditions, resulting in localized deterioration of cargo integrity. Proper handling procedures, adequate packaging protection, and careful storage during transportation were recommended to prevent recurrence.



### P & I Condition Survey

A P&I Condition Survey plays a vital role in identifying potential operational, safety, and maintenance risks before they develop into major incidents or insurance claims. From hull structure and machinery spaces to firefighting systems, navigation equipment, pollution prevention measures, and onboard

procedures, every aspect of the vessel is reviewed to identify deficiencies that may increase operational or insurance risk.



### Cargo Insurance Survey

Cargo insurance surveys are essential in today's shipping industry, helping identify cargo damage, determine causes of loss, and support smooth claim resolution. Accurate surveys also help improve cargo handling, reduce disputes, and strengthen risk management across the supply chain.



### Draft Survey

A draft survey of wheat in bulk was conducted on behalf of the terminal site to determine the quantity of cargo handled during loading/discharge operations. Initial and final draft measurements, along with vessel particulars, ballast, and consumables, were verified to ascertain the cargo quantity accurately.

The survey was carried out in accordance with standard draft survey procedures, and findings were reported based on observed conditions at the time of inspection.



### Disposal Survey

A mango juice consignment was inspected for disposal purposes, and signs of product deterioration were observed, including compromised packaging integrity and indications that the product was no longer fit for intended consumption. Based on the condition observed at the time of survey, the affected stock was deemed unsuitable for further distribution or use.

Disposal was therefore recommended in accordance with applicable health, safety, and environmental regulations, under surveyor supervision where required.

## PROJECTS CORNER



### Calibration of Gas Meter

Calibration Engineers team specialize in the calibration of gas meters for marine applications. They ensure accurate gas flow measurements, critical for shipboard operations and regulatory compliance. Their expertise guarantees that gas meters perform reliably under marine conditions, adhering to international standards and safety protocols.



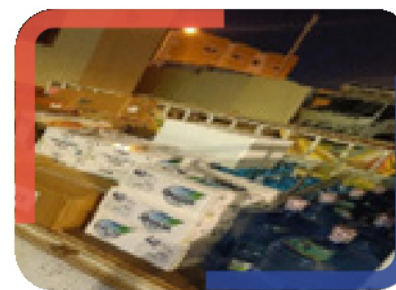
### Calibration of Dew Point Meter

The team carried out the calibration of a dew point meter, performing accuracy checks and adjustments before delivering it back to the client for continued operational use.



### Ship Chandling Supplies

Essential for seamless vessel operations, our ship chandling services deliver a comprehensive range of provisions, safety equipment, maintenance tools, and other operational essentials. These supplies ensure efficient onboard activities while maintaining full compliance with maritime regulations.



### Spare Supplies

Reliable spare parts are essential for maintaining the operational efficiency of marine vessels and offshore equipment.

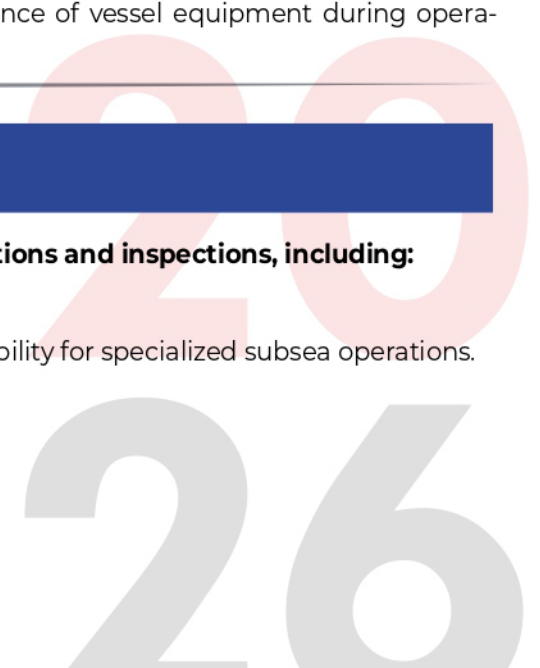
Our team provides a comprehensive range of spare supplies, including critical components and replacement parts for various marine systems. Their parts meet industry standards, ensuring the durability and performance of vessel equipment during operations.

## OFFSHORE OPERATIONS



### CHM Global Offshore team has successfully executed a series of key marine operations and inspections, including:

- DP Annual Trials on a Platform Supply Vessel.
- OVID Inspection on a Heavy Lift Vessel.
- Vessel Suitability Survey on a DP3 Dive Support Vessel, assessing readiness and capability for specialized subsea operations.
- Vessel Suitability Survey on an Anchor Tug Supply Handling Vessel.



## BIRTHDAY CHEERS - CELEBRATING OUR TEAM!



**Vinil Andrews**  
May 8

Marine Surveyor



**Ferdin Jyothish**  
May 25

Marine Surveyor,  
Bahrain



**Abdul Khader**  
May 31

Driver

As we continue to grow and evolve, we remain committed to delivering excellence through trusted expertise, timely solutions, and a client-focused approach across the marine and off-shore industries. Thank you for your continued trust and support.

**Warm Regards,**  
**CHM Global**

20  
26