

Newsletter
April
2026



CHM
GLOBAL

www.chm-global.com

CHM Global LLC

Office No. 6, Ground Floor, Building No. 1, Financial Square, C-Ring Road, Doha, Qatar
24x7: +974-50112300 | Tel: +974-4417 9000 | Fax: +974-4481 2429
Email: info@chm-global.com | Website: www.chm-global.com



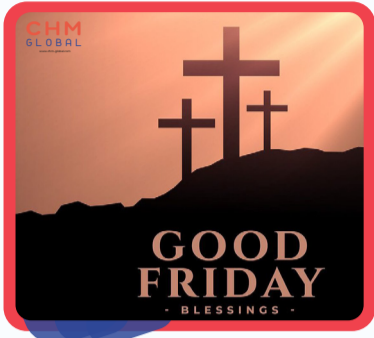
Monthly Highlights – April Edition

Staying Positive in Changing Times

April served as a reminder that resilience and adaptability continue to drive progress, even in challenging circumstances.

Good Friday April 3

Observed as a day of reflection, Good Friday commemorates the sacrifice of Jesus Christ and serves as a reminder of compassion, humility, and faith.



National Maritime Day April 5

Recognizing the vital role of the maritime industry and the dedication of seafarers in keeping global trade moving.



Easter April 5

Easter marks a celebration of hope, renewal, and new beginnings, bringing a sense of joy and positivity across communities.



Vishu April 15

Celebrated across different regions of India, Vishu and Tamil New Year both signify the beginning of a new year filled with prosperity, positivity, and fresh beginnings, marked by traditions that reflect gratitude and hope.



World Earth Day April 22

A global call to protect our planet and embrace sustainable practices for a greener future.



In this edition, we provide key updates across our Survey, Project, and Offshore divisions, highlighting critical operations, inspections, and ongoing projects. Explore the latest insights and accomplishments that reinforce our commitment to safety, quality, and operational excellence.

SURVEY SPOTLIGHT



Temperature Excursion of Pharmaceutical Products

A temperature excursion incident was reported during the air transit of a pharmaceutical product. However, upon inspection, the shipment quantity was verified, storage conditions were found to be within the acceptable range, and no physical damage

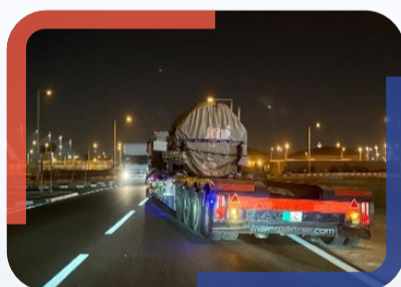
was observed.



Cargo Damage

A grape consignment was inspected, and visible mold growth with localized spoilage was observed despite acceptable temperature readings at the time of survey. This suggested that a prior break in the cold chain had occurred during transit or handling. The damage indicated progressive deterioration

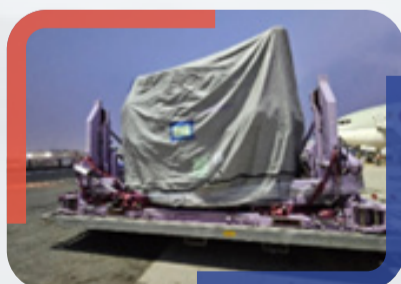
due to earlier temperature fluctuations. Continuous temperature monitoring and strict cold chain management were recommended to mitigate such losses.



Engine Road Movement

The operation required detailed route surveys, load calculations, and coordination with to ensure safe transit. Escorts and traffic management were arranged to handle oversized cargo and minimize disruption. Strict safety measures were followed throughout the movement to prevent damage to the

engine and surrounding infrastructure.



Flight Engine Import

Discharge monitoring was conducted for the nominated cargo — one Engine shipped in three packages, including the Fan Case with Stand, Storage Kit, and Engine Core with Stand. The cargo was safely discharged at Hamad International Airport, Qatar, with all operations carried out under strict handling

protocols and safety standards.

Flight Engine Export

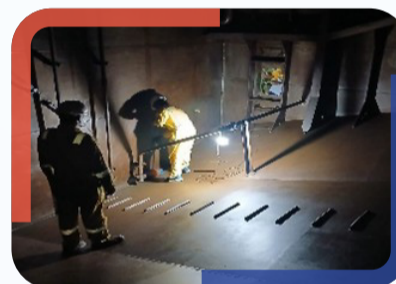
Load monitoring was performed for the nominated cargo, one Engine shipped in three packages. The operation encompassed safe loading at Hamad International Airport for its voyage. The scope included supervision of cargo handling and securing processes, strict adherence to safety and handling standards, and reporting of any damage or incidents observed during the operation.

standards, and reporting of any damage or incidents observed during the operation.



Inspection on Chilled Meat Products

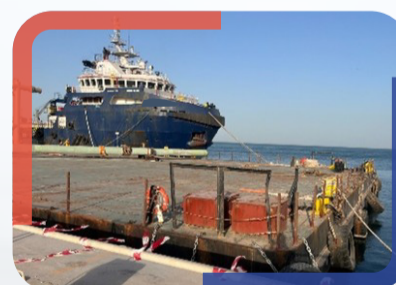
Inspection of chilled beef and lamb following a delayed shipment focuses on assessing potential temperature abuse and spoilage risks. Inspectors verify whether the cold chain has been consistently maintained and examine the products for any signs of discoloration, off-odors, or other indicators of deterioration.



Diesel Sea Oil Tank Cleaning

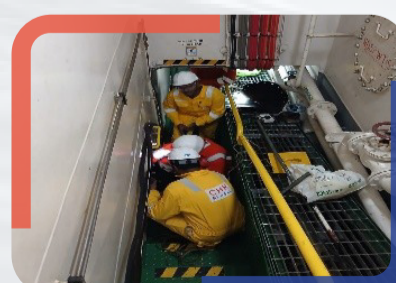
Diesel sea oil tank cleaning was carried out as part of routine maintenance to ensure optimal system performance and contamination control. The process involved draining residual fuel, removing sludge and sediments, and conducting thorough internal cleaning using approved methods. Ventilation and gas-freeing procedures were followed to maintain safety throughout the operation. Post-cleaning inspections confirmed the tank's cleanliness and readiness for service. This activity helped improve fuel quality management and operational efficiency onboard.

Post-cleaning inspections confirmed the tank's cleanliness and readiness for service. This activity helped improve fuel quality management and operational efficiency onboard.



Towage Inspection

Towage operations of tugs and barges were successfully executed under strict safety protocols and precise operational coordination. Comprehensive inspections were conducted to ensure the reliability and efficiency of the towage, including verification of towing equipment such as lines, winches, and hooks. The condition of the tugs and barges was thoroughly assessed to identify any wear or damage, ensuring optimal performance and safety throughout the operation.



Gas Free Inspection

Gas-free inspection is a crucial safety procedure conducted onboard vessels to ensure that confined spaces, such as cargo holds, tanks, and decks, are free from hazardous gases before personnel entry. This inspection is essential for preventing accidents, protecting workers, and maintaining a safe working

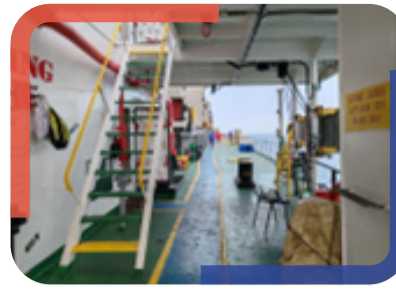
environment. During a gas-free inspection, trained professionals check the air quality within these spaces, ensuring there are no dangerous gas concentrations such as flammable, toxic, or oxygen-deficient gases.



MWS for Heavy Lift

The Marine Warranty Survey (MWS) for the heavy-lift operation was carried out to ensure full compliance with approved engineering standards and operational safety requirements. Our scope included reviewing lifting plans, verifying equipment certification, assessing site conditions, and overseeing the

execution to confirm that all activities were performed safely and in accordance with industry best practices.



Condition Survey

A thorough vessel condition survey was conducted to assess the ship's overall safety and operational readiness. The inspection covered the hull, deck, and cargo areas, identifying maintenance needs and minor wear. Machinery, equipment, and navigation systems were reviewed, while safety and

life-saving appliances were checked for proper functioning. Crew accommodations and documentation were also verified to ensure compliance with regulatory standards. The survey provided a clear overview of the vessel's condition, supporting safe and efficient operations.

PROJECTS CORNER



Calibration of Gas Meter

Calibration Engineers team specialize in the calibration of gas meters for marine applications. They ensure accurate gas flow measurements, critical for shipboard operations and regulatory compliance. Their expertise guarantees that gas meters perform reliably under marine conditions, adhering to international standards and safety protocols.

national standards and safety protocols.



Spare Supplies

Reliable spare parts are essential for maintaining the operational efficiency of marine vessels and offshore equipment. Our team provides a comprehensive range of spare supplies, including critical components and replacement parts for various marine systems. Their parts meet industry standards, ensuring the durability and performance of vessel equipment during operations.

ensuring the durability and performance of vessel equipment during operations.



Ship Chandling Supplies

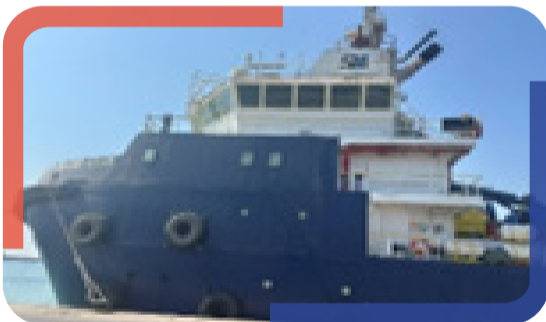
Essential for seamless vessel operations, our ship chandling services deliver a comprehensive range of provisions, safety equipment, maintenance tools, and other operational essentials. These supplies ensure efficient onboard activities while maintaining full compliance with maritime regulations.



Calibration of Dew Point Meter

The team carried out the calibration of a dew point meter, performing accuracy checks and adjustments before delivering it back to the client for continued operational use.

OFFSHORE OPERATIONS



CHM Global Offshore team has successfully executed a series of key marine operations and inspections, including:

- DP Annual Trials on a Platform Supply Vessel.
- OVID Inspection on a Heavy Lift Vessel.
- Vessel Suitability Survey on a DP3 Dive Support Vessel, assessing readiness and capability for specialized subsea operations.
- Vessel Suitability Survey on an Anchor Tug Supply Handling Vessel.

NEW JOINER SPOTLIGHT

We are delighted to welcome the following team members to the CHM Global family who joined in the month of April.



Juvelyn Limbana Jardio
Designation: Offshore Coordinator
Department: Offshore

BIRTHDAY CHEERS - CELEBRATING OUR TEAM!



Ajesh Mohan
April 1



Suresh Karki
April 20



Sherin Shaji
April 26

Thank you and stay tuned for more updates as we continue to provide you with the highest quality service and support for all your logistics and surveying needs.

Warm Regards,
CHM Global