

Newsletter March 2026



CHM
GLOBAL

Qatar | Bahrain | Oman | UAE | India | UK
www.chm-global.com

CHM Global LLC

Office No. 6, Ground Floor, Building No. 1, Financial Square, C-Ring Road, Doha, Qatar
24x7: +974-50112300 | Tel: +974-4417 9000 | Fax: +974-4481 2429
Email: info@chm-global.com | Website: www.chm-global.com



Monthly Highlights – March Edition

In a time when parts of the world continue to face challenges of conflict and uncertainty, we are reminded of the strength found in unity and shared purpose. As a global community, we stand together supporting one another with resilience, understanding, and a collective commitment to peace. Looking ahead, we remain hopeful and focused on positive change. Let us carry this spirit forward, standing united and working together toward a brighter and more hopeful tomorrow.

Holi Festival March 4

Holi, the vibrant Festival of Colors, celebrated with much enthusiasm, Holi marks the arrival of spring and the triumph of good over evil. This joyous occasion promotes unity, friendship, and the spirit of togetherness. Wishing you a very Happy Holi!



International Women's Day March 8

International Women's Day honors the achievements and contributions of women worldwide. Let's recognize and uplift the women who continue to drive positive change in our communities and beyond.



Eid -Al-Fitr March 20

Eid-Al-Fitr, marks the end of Ramadan, a month of fasting and reflection for Muslims worldwide. It is a joyous occasion filled with prayers, feasts, and acts of charity. May this Eid bring peace, happiness, and prosperity to all. Eid Mubarak!



World Water Day March 22

World Water Day, a day dedicated to raising awareness about the global water crisis and promoting the sustainable management of freshwater resources. Let's unite to safeguard water for future generations and ensure its availability for all.



In this edition, we provide key updates across our Survey, Project, and Offshore divisions, highlighting critical operations, inspections, and ongoing projects. Explore the latest insights and accomplishments that reinforce our commitment to safety, quality, and operational excellence.

SURVEY SPOTLIGHT



Condition survey of pleasure yacht

A condition survey inspection of a pleasure yacht was carried out to assess the vessel's overall structural integrity, machinery condition, and safety standards. It typically covers the hull, deck, superstructure, propulsion systems, electrical installations, and onboard equipment, along with safety gear and compliance with relevant regulations. The survey aims to identify defects, maintenance issues, or potential risks, providing an objective evaluation of the yacht's condition for insurance.



Discharge Monitoring

Discharge monitoring was conducted to observe cargo discharge operations and ensure safe, efficient handling in line with agreed terms. It involved tracking discharge rates, verifying quantities, and identifying discrepancies, while monitoring cargo condition to prevent loss, damage, or contamination.

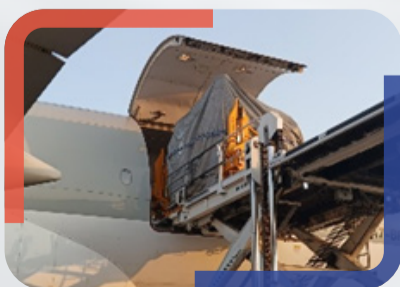
tion.



Gas Free Inspection

Gas-free inspection is a crucial safety procedure conducted onboard vessels to ensure that confined spaces, such as cargo holds, tanks, and decks, are free from hazardous gases before personnel entry. This inspection is essential for preventing accidents, protecting workers, and maintaining a safe working environment. During a gas-free inspection, trained professionals check the air quality within these spaces, ensuring there are no dangerous gas concentrations such as flammable, toxic, or oxygen-deficient gases.

environment. During a gas-free inspection, trained professionals check the air quality within these spaces, ensuring there are no dangerous gas concentrations such as flammable, toxic, or oxygen-deficient gases.



Flight Engine Import

Discharge monitoring was conducted for the nominated cargo — one Engine shipped in three packages, including the Fan Case with Stand, Storage Kit, and Engine Core with Stand. The cargo was safely discharged at Hamad International Airport, Qatar, with all operations carried out under strict handling protocols and safety standards.

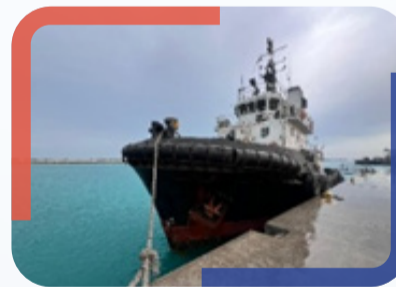
protocols and safety standards.



P&I condition survey of a Bulk carrier vessel

A P&I condition survey on a bulk carrier was a preventive inspection carried out to assess the vessel's seaworthiness, maintenance standards, and operational safety. It focused on critical areas such as hull integrity, hatch cover tightness, cargo hold condition, machinery reliability, and safety equipment readiness, along with crew practices and compliance with international regulations. The objective was to identify potential risks that could have led to claims, including cargo damage, pollution, or personal injury, and to ensure any deficiencies were rectified to maintain safe and efficient operations.

machinery reliability, and safety equipment readiness, along with crew practices and compliance with international regulations. The objective was to identify potential risks that could have led to claims, including cargo damage, pollution, or personal injury, and to ensure any deficiencies were rectified to maintain safe and efficient operations.



Towage Inspection

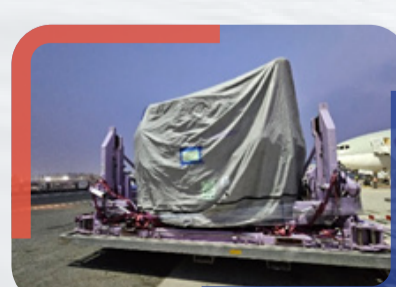
Towage operations of tugs and barges were successfully executed under strict safety protocols and precise operational coordination. Comprehensive inspections were conducted to ensure the reliability and efficiency of the towage, including verification of towing equipment such as lines, winches, and hooks. The condition of the tugs and barges was thoroughly assessed to identify any wear or damage, ensuring optimal performance and safety throughout the operation.

winches, and hooks. The condition of the tugs and barges was thoroughly assessed to identify any wear or damage, ensuring optimal performance and safety throughout the operation.



Draft Survey

Surveyors conducted a survey to collect data on the quantity and type of goods onboard. The information gathered helped manage the cargo, ensured safety compliance, and optimized vessel operations by accurately monitoring the cargo load.



Flight Engine Export

Load monitoring was performed for the nominated cargo, one Engine shipped in three packages. The operation encompassed safe loading at Hamad International Airport for its voyage. The scope included supervision of cargo handling and securing processes, strict adherence to safety and handling standards, and reporting of any damage or incidents observed during the operation.

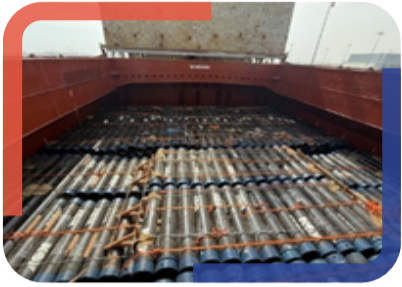
standards, and reporting of any damage or incidents observed during the operation.



MWS for Heavy Lift

The Marine Warranty Survey (MWS) for the heavy-lift operation was carried out to ensure full compliance with approved engineering standards and operational safety requirements. Our scope included reviewing lifting plans, verifying equipment certification, assessing site conditions, and overseeing the

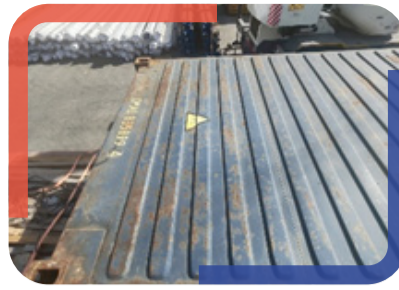
execution to confirm that all activities were performed safely and in accordance with industry best practices.



Pipe Discharge

Specializing in pipe discharge inspection services, experienced surveyors ensure the safe and efficient unloading of pipes. Thorough inspections are conducted to identify any damage or inconsistencies during the process. Precision in documentation and timely reporting guarantee that cargo is

handled with the utmost care and professionalism, fully meeting industry standards. Trustworthy, expert pipe discharge services are always delivered with reliability and expertise.



Container Inspection

A thorough inspection was carried out on the container and cargo to assess overall condition and compliance. The CSC plate was checked, and the seal was verified and locked to ensure safety and security. During the inspection, corrosion damage was observed on the container. For the cargo, the

number of boxes and packaging were verified, and the external condition was assessed. The inspection was limited to an external review to confirm visible condition and compliance.



Cargo Damage

A damage and insurance survey was conducted on reefer containers carrying cherries. The inspection included verification of container conditions, temperature settings, and product quality. Physical assessment was carried out to identify any signs of damage, decay, softening, or cold

chain deviation. A detailed evaluation of affected quantities was performed based on visible condition. Findings were documented with photographic evidence, including pulp temperature checks, to support claim assessment.

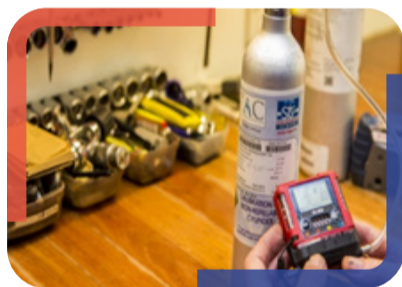
PROJECTS CORNER



Grab Inspection

Our team provides pre-inspection of grabs onboard vessels to ensure their condition and functionality meet operational and safety standards. This thorough inspection process assesses key components such as hydraulic systems, bucket integrity, and wear

parts, identifying any maintenance needs before they affect cargo handling operations, ensuring safety and efficiency in marine environments.



Calibration of Gas Meter

Calibration Engineers team specialize in the calibration of gas meters for marine applications. They ensure accurate gas flow measurements, critical for shipboard operations and regulatory compliance. Their expertise guarantees that gas meters perform reliably

under marine conditions, adhering to international standards and safety protocols.



Spare Supplies

Reliable spare parts are essential for maintaining the operational efficiency of marine vessels and offshore equipment. Our team provides a comprehensive range of spare supplies, including critical components and replacement parts for various marine

systems. Their parts meet industry standards, ensuring the durability and performance of vessel equipment during operations.



Ship Chandling Supplies

Essential for seamless vessel operations, our ship chandling services deliver a comprehensive range of provisions, safety equipment, maintenance tools, and other operational essentials. These supplies ensure efficient onboard activities while maintaining full compliance with maritime regulations.



Fresh Water Supply at Doha Port

Fresh water supply operations were carried out seamlessly at Doha Port, ensuring timely delivery and uninterrupted vessel services. Quality checks were conducted to confirm water standards before supply.



Calibration Of torque Wrench

The calibration of torque wrenches, performed by Calibration Engineers, ensures accurate torque measurements for marine operations. This service guarantees that torque wrenches meet industry standards, which is crucial for secure and precise fastening during vessel maintenance, construction,

and offshore operations.



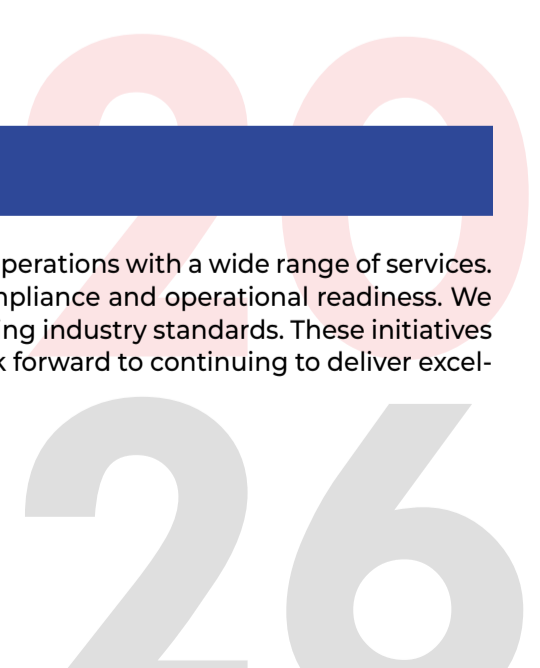
Calibration of Dew Point Meter

The team carried out the calibration of a dew point meter, performing accuracy checks and adjustments before delivering it back to the client for continued operational use.

OFFSHORE OPERATIONS



Our Offshore Survey team has been actively engaged in supporting client operations with a wide range of services. Recent activities include vessel and barge suitability surveys ensuring compliance and operational readiness. We successfully conducted OVID inspections across multiple vessels, maintaining industry standards. These initiatives reflect our commitment to safety, reliability, and client satisfaction. We look forward to continuing to deliver excellence in all offshore surveys.



BIRTHDAY CHEERS - CELEBRATING OUR TEAM!



Firnas Mohammed

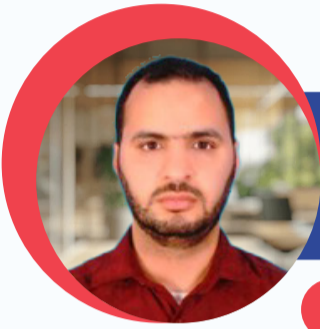
March 4



Abhimanyu Marwaha

March 5

WORK ANNIVERSARIES



Daoud Benabdallah

Completed 3 years of dedicated service since joining in 2023

Designation: IT Service Engineer



Prasanna Pol

Completed 3 years of dedicated service since joining in 2023

Designation: Team Lead - Projects



Venkat Jagannarayanan

Completed 2 years of dedicated service since joining in 2024.

Designation: Marine Surveyor



Varghese Shaji

Completed 1 year of dedicated service since joining in 2025

Designation: Project Associate

Thank you and stay tuned for more updates as we continue to provide you with the highest quality service and support for all your logistics and surveying needs.

**Warm Regards,
CHM Global**

20
26