

CHM GLOBAL

Qatar | Bahrain | Oman | UAE | India | UK
www.chm-global.com

Celebrates



29 January 2026

CHM Global LLC

Office No. 6, Ground Floor, Building No. 1, Financial Square, C-Ring Road, Doha, Qatar
24x7: +974-50112300 | Tel: +974-4417 9000 | Fax: +974-4481 2429
Email: info@chm-global.com | Website: www.chm-global.com



www.chm-global.com



Captain Himanshu Marwaha
Founder

Honoring a Legacy. Leading with Excellence

Founded on 29 January 2019 and registered with the Qatar Financial Centre (QFC), CHM Global was established by Captain Himanshu Marwaha, a visionary maritime professional, Master Mariner, and renowned Marine Loss Adjuster. With over 15 years of sea-going experience, Captain Marwaha brought unparalleled expertise in marine operations, which he adeptly applied to marine surveying, advisory consulting, and loss adjusting services. Highly respected within the maritime industry, his contributions significantly enhanced operational safety and efficiency. His legacy lives on in the values he instilled and the impact he made on everyone at CHM Global. He will forever remain in our hearts — remembered with deep respect, gratitude, and love.



Anshu Marwaha
Managing Director

Leadership, Services & Achievements

Ms. Anshu Marwaha has carried forward the company's legacy of integrity, professionalism, and technical excellence, while enhancing the delivery of independent, reliable, and internationally aligned marine solutions. Over the past year, CHM Global has successfully completed 1203 projects and formed collaborations with 40 new clients, reinforcing its reputation as a trusted partner in complex maritime operations.

We at CHM Global offer a comprehensive range of services, including Marine Surveying & Assurance, Marine Warranty Surveys (MWS), Maritime Consultancy, Marine Inspection & Compliance, Claims & Legal Services, LNG & Specialized Operations, DRI (Direct Reduced Iron) Services, Offshore & Subsea Engineering, Offshore Tank Cleaning (LPG/Diesel/Oil), Yachts & Vessel Services, Ship Management & Agency, Flag & Registry Services, Industrial & Occupational Safety, and Offshore Engineering with advanced software capabilities.

With a clear vision for innovation and excellence, Ms. Marwaha continues to guide the organization toward sustainable growth while upholding the highest standards of service and technical expertise.

Monthly Highlights – January Edition

The January Edition of our Monthly Highlights captures a strong start to the year, featuring key achievements, important milestones, and memorable moments from across the team. From successful project progress to celebrations and recognitions, this edition reflects our collective efforts and positive momentum as we step into the new year.

New Year 2026 January 1

A fresh year begins with new possibilities and renewed focus. 2026 is all about moving forward together and achieving more. Happy New Year!



Lohri Festival January 13

Lohri marks the harvest season and the end of winter, celebrated with fire, folk traditions, and shared joy. A festival rooted in gratitude and community. Happy Lohri!



Makar Sankranti/ Pongal/Bihu January 15

Bahrain National Day celebrates the Kingdom's independence, rich heritage, and national unity. It is a proud occasion to honor Bahrain's history, cultural identity, and continued progress under visionary leadership.



Republic Day - India January 26

Republic Day marks the adoption of the Constitution of India, celebrating democracy, unity, and national pride. It is a reminder of our shared values and responsibilities as citizens.



Memorable Moments from Last Year

Last year was filled with small yet meaningful moments—shared celebrations, team bonding, thoughtful gestures. These moments reminded us that it's the people and experiences that truly make our workplace special.



In this edition, we provide key updates across our Survey, Project, and Offshore divisions, highlighting critical operations, inspections, and ongoing projects. Explore the latest insights and accomplishments that reinforce our commitment to safety, quality, and operational excellence.

SURVEY SPOTLIGHT



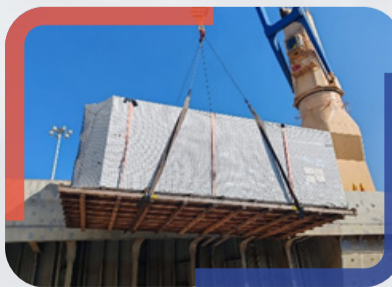
Towage Inspection

Towage operations of tugs and barges were successfully executed under strict safety protocols and precise operational coordination. Comprehensive inspections were conducted to ensure the reliability and efficiency of the towage, including verification of towing equipment such as lines, winches, and hooks. The condition of the tugs and barges was thoroughly assessed to identify any wear or damage, ensuring optimal performance and safety throughout the operation.



DRI

Team conducted inspections of Direct Reduced Iron (DRI) shipments, a critical material in steel production, ensuring full compliance with industry standards and safety regulations. Our team carried out cargo inspections, draft surveys, and ultrasonic testing to detect any leakage and maintain cargo integrity. Additional quality control measures, including thermocoupling, hatch testing, and hold inspections, were performed throughout the loading process.



Port Captaincy

Port Captaincy refers to a position or role within a port authority or shipping company responsible for overseeing the safe and efficient operations of vessels arriving at or departing from a port. Port Captains, also known as Harbor Masters in some regions, play a crucial role in managing maritime traffic and ensuring compliance with port regulations and safety standards. Key responsibilities of a Port Captain may include Vessel Traffic Management, Navigation and Pilotage, Safety Compliance, Emergency Response, Communication, Berthing and Mooring.



Engine Sea Movement

The engine movement operation was carried out smoothly, beginning with loading the engine onto a low-bed trailer. It was then escorted from HIA to Hamad Port, where it was transferred onto a flat rack (FR) container. Lashing was done securely, followed by covering the engine with tarpaulin for protection. Finally, the engine was loaded onto the vessel for sea transport.



Draft Survey

Surveyors conducted a survey to collect data on the quantity and type of goods onboard. The information gathered helped manage the cargo, ensured safety compliance, and optimized vessel operations by accurately monitoring the cargo load.



Flight Engine Import

Discharge monitoring was conducted for the nominated cargo — one Engine shipped in three packages, including the Fan Case with Stand, Storage Kit, and Engine Core with Stand. The cargo was safely discharged at Hamad International Airport, Qatar, with all operations carried out under strict handling

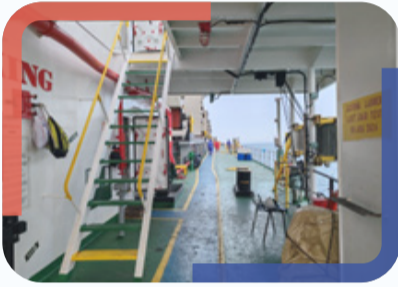
protocols and safety standards.



MWS for Heavy Lift

The Marine Warranty Survey (MWS) for the heavy-lift operation was carried out to ensure full compliance with approved engineering standards and operational safety requirements. Our scope included reviewing lifting plans, verifying equipment certification, assessing site conditions, and overseeing the

execution to confirm that all activities were performed safely and in accordance with industry best practices.



Condition Survey

A thorough vessel condition survey was conducted to assess the ship's overall safety and operational readiness. The inspection covered the hull, deck, and cargo areas, identifying maintenance needs and minor wear. Machinery, equipment, and navigation systems were reviewed, while safety and

life-saving appliances were checked for proper functioning. Crew accommodations and documentation were also verified to ensure compliance with regulatory standards. The survey provided a clear overview of the vessel's condition, supporting safe and efficient operations.



Gas Free Inspection

Gas-free inspection is a crucial safety procedure conducted onboard vessels to ensure that confined spaces, such as cargo holds, tanks, and decks, are free from hazardous gases before personnel entry. This inspection is essential for preventing accidents, protecting workers, and maintaining a safe working

environment. During a gas-free inspection, trained professionals check the air quality within these spaces, ensuring there are no dangerous gas concentrations such as flammable, toxic, or oxygen-deficient gases.



Flight Engine Export

Load monitoring was performed for the nominated cargo, one Engine shipped in three packages. The operation encompassed safe loading at Hamad International Airport for its voyage. The scope included supervision of cargo handling and securing processes, strict adherence to safety and handling

standards, and reporting of any damage or incidents observed during the operation.



Cargo Damage

During inspection, damage was observed to mixed cargo comprising multivitamin bottles and a bus bar system. The multivitamin consignments showed signs of improper handling and inadequate protection, with packaging disturbed and potential contamination risk. The bus bar system was found

inadequately secured within wooden crates, with insufficient internal bracing and protection, exposing the equipment to impact and handling damage. The observed condition indicates shortcomings in packaging, securing, and cargo handling practices during storage and/or transportation.

PROJECTS CORNER



Grab Inspection

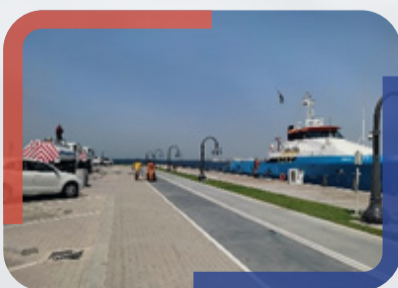
Our team provides pre-inspection of grabs onboard vessels to ensure their condition and functionality meet operational and safety standards. This thorough inspection process assesses key components such as hydraulic systems, bucket integrity, and wear parts, identifying any maintenance needs

before they affect cargo handling operations, ensuring safety and efficiency in marine environments.



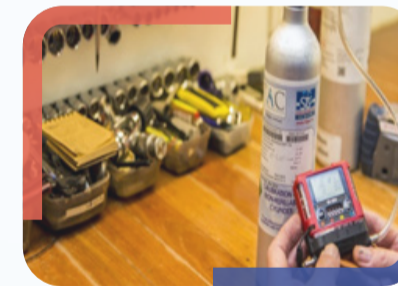
Ship Chandling Supplies

Essential for seamless vessel operations, our ship chandling services deliver a comprehensive range of provisions, safety equipment, maintenance tools, and other operational essentials. These supplies ensure efficient onboard activities while maintaining full compliance with maritime regulations.



Fresh Water Supply at Doha Port

Fresh water supply operations were carried out seamlessly at Doha Port, ensuring timely delivery and uninterrupted vessel services. Quality checks were conducted to confirm water standards before supply.



Calibration of Gas Meter

Calibration Engineers team specialize in the calibration of gas meters for marine applications. They ensure accurate gas flow measurements, critical for shipboard operations and regulatory compliance. Their expertise guarantees that gas meters perform reliably under marine conditions, adhering to international standards and safety protocols.

national standards and safety protocols.



Spare Supplies

Reliable spare parts are essential for maintaining the operational efficiency of marine vessels and offshore equipment.

Our team provides a comprehensive range of spare supplies, including critical components and replacement parts for various marine systems. Their parts meet industry standards,

ensuring the durability and performance of vessel equipment during operations.

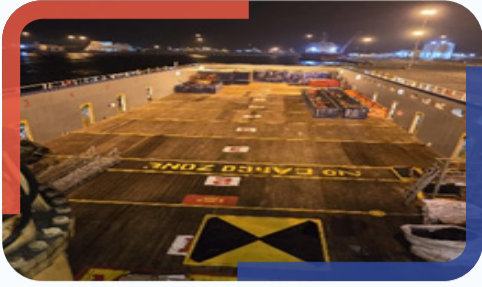


Calibration of Dew Point Meter

The team carried out the calibration of a dew point meter, performing accuracy checks and adjustments before delivering it back to the client for continued operational use.

OFFSHORE OPERATIONS

CHM was appointed MWS on behalf of the insurers and the re-insurers to oversee the offloading operation of a tug boat. The job scope included a document review of lifting & rigging plan & lifting method statement. Our MWS surveyor attended pre-discharge and offloading survey of tugboat.



Two of our Diving/ROV site representative are currently working onboard vessels for a major client in Qatar. Their responsibilities include planning various subsea operations, ensuring the safety of operations, managing the ROV/Diving team, and coordinating with other onboard departments to achieve project objectives efficiently and safely. The team also conducted several OVID, DP Trails, DP assurance and VSS on behalf of client, charterer and operator. These inspection protocols allow project and marine assurance teams to assess the safety and environmental performance of vessels and operators in a more effective and uniform manner. This inspection also ensures proper maintenance and functionality of marine assets and their suitability for the work scope.

NEW JOINER SPOTLIGHT

We are delighted to welcome the following team members to the CHM Global family who joined in the month of January.



Sadik Mohammed
Designation: Project Coordinator
Department: Projects



Noel Issac
Designation: Marine Surveyor
Department: Projects



Ninson Martin
Designation: Marine Surveyor
Department: Projects



Issac Thasamani
Designation: Driver
Department: Logistics

BIRTHDAY CHEERS - CELEBRATING OUR TEAM!



Prasanna Pol

1st January



Rajneesh Singh

23rd January

WORK ANNIVERSARIES



Ajesh Mohan
Completed 7 years of dedicated service

Designation: Assistant Manager - Finance



Ravi Ramaswamy
Completed 4 years of dedicated service

Designation: Assistant Manager - Operations



Saju Rajamony
Completed 3 years of dedicated service

Designation: Driver



Abhimanyu Marwaha
Completed 3 years of dedicated service

Designation: Business Development Manager

Thank you and stay tuned for more updates as we continue to provide you with the highest quality service and support for all your logistics and surveying needs.

Warm Regards,
CHM Global

20
26