

Newsletter February 2026



CHM
GLOBAL

Qatar | Bahrain | Oman | UAE | India | UK
www.chm-global.com

CHM Global LLC

Office No. 6, Ground Floor, Building No. 1, Financial Square, C-Ring Road, Doha, Qatar
24x7: +974-50112300 | Tel: +974-4417 9000 | Fax: +974-4481 2429
Email: info@chm-global.com | Website: www.chm-global.com



Monthly Highlights – February Edition

The February Edition of our Monthly Highlights captures a month of progress and perseverance. Through collaboration and commitment, the team continues to achieve important milestones. We carry this positive energy forward as we build on our success.

Qatar National Sports Day February 10

On Qatar National Sports Day, we come together to promote wellness, unity, and an active spirit. A day that inspires healthier habits and stronger communities across the nation.



Ramadan Kareem February 18

Ramadan Kareem as we welcome a month of reflection, gratitude, and togetherness. May this holy month bring peace, prosperity, and countless blessings to all.



In this edition, we provide key updates across our Survey, Project, and Offshore divisions, highlighting critical operations, inspections, and ongoing projects. Explore the latest insights and accomplishments that reinforce our commitment to safety, quality, and operational excellence.

SURVEY SPOTLIGHT

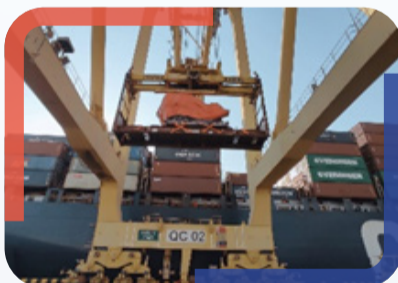
Towage Inspection



Towage operations of tugs and barges were successfully executed under strict safety protocols and precise operational coordination. Comprehensive inspections were conducted to ensure the reliability and efficiency of the towage, including verification of towing equipment such as lines,

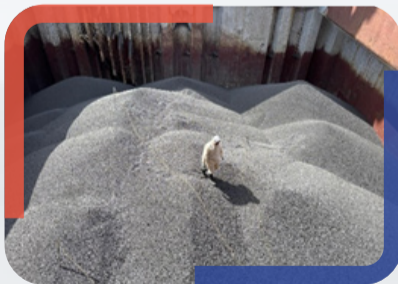
winches, and hooks. The condition of the tugs and barges was thoroughly assessed to identify any wear or damage, ensuring optimal performance and safety throughout the operation.

Engine Sea Movement



The engine movement operation was carried out smoothly, beginning with loading the engine onto a low-bed trailer. It was then escorted from HIA to Hamad Port, where it was transferred onto a flat rack (FR) container. Lashing was done securely, followed by covering the engine with tarpaulin for protection. Finally, the engine was loaded onto the vessel for sea transport.

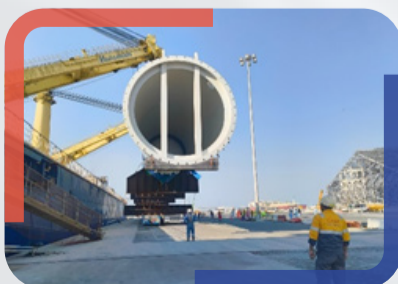
DRI



Inspections of Direct Reduced Iron (DRI) shipments were conducted, a critical material in steel production, ensuring full compliance with industry standards and safety regulations. Our team carried out cargo inspections, draft surveys, and ultrasonic testing to detect any leakage and maintain

cargo integrity. Additional quality control measures, including thermocoupling, hatch testing, and hold inspections, were performed throughout the loading process.

MWS for Heavy Lift



The Marine Warranty Survey (MWS) for the heavy-lift operation was carried out to ensure full compliance with approved engineering standards and operational safety requirements. Our scope included reviewing lifting plans, verifying equipment certification, assessing site conditions, and overseeing the

execution to confirm that all activities were performed safely and in accordance with industry best practices.

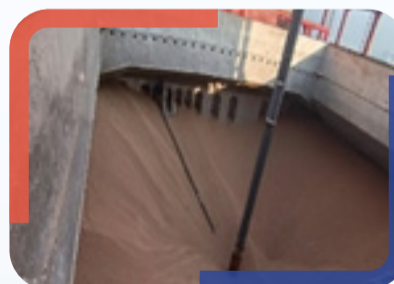
Gas Free Inspection



Gas-free inspection is a crucial safety procedure conducted onboard vessels to ensure that confined spaces, such as cargo holds, tanks, and decks, are free from hazardous gases before personnel entry. This inspection is essential for preventing accidents, protecting workers, and maintaining a safe working

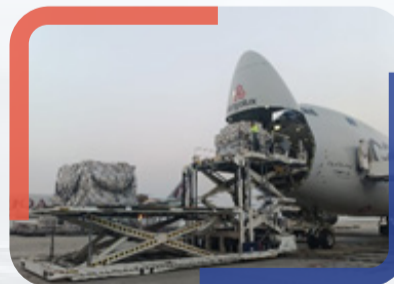
environment. During a gas-free inspection, trained professionals check the air quality within these spaces, ensuring there are no dangerous gas concentrations such as flammable, toxic, or oxygen-deficient gases.

Draft Survey



Surveyors conducted a survey to collect data on the quantity and type of goods onboard. The information gathered helped manage the cargo, ensured safety compliance, and optimized vessel operations by accurately monitoring the cargo load.

Flight Engine Import



Discharge monitoring was conducted for the nominated cargo — one Engine shipped in three packages, including the Fan Case with Stand, Storage Kit, and Engine Core with Stand. The cargo was safely discharged at Hamad International Airport, Qatar, with all operations carried out under strict handling

protocols and safety standards.

Flight Engine Export



Load monitoring was performed for the nominated cargo, one Engine shipped in three packages. The operation encompassed safe loading at Hamad International Airport for its voyage. The scope included supervision of cargo handling and securing processes, strict adherence to safety and handling

standards, and reporting of any damage or incidents observed during the operation.



Container and Cargo Inspection

A thorough inspection was carried out on the container and cargo to assess overall condition and compliance. The CSC plate was checked, and the seal was verified and locked to ensure safety and security. During the inspection, corrosion damage was observed on the container. For the cargo, the number of boxes and packaging were verified, and the external condition was assessed. The inspection was limited to an external review to confirm visible condition and compliance.



Break Bulk Discharge

Break bulk discharge process includes careful loading and monitoring of discharge operations to ensure the safe and efficient handling of the cargo. Our team ensure that safety protocols are followed, cargo is protected from damage, and unloading is carried out smoothly and on schedule.

Continuous monitoring ensures operational standards are met throughout the entire process.



Pipe Discharge

Specializing in pipe discharge inspection services, experienced surveyors ensure the safe and efficient unloading of pipes. Thorough inspections are conducted to identify any damage or inconsistencies during the process. Precision in documentation and timely reporting guarantee that cargo is handled with the utmost care and professionalism, fully meeting industry standards. Trustworthy, expert pipe discharge services are always delivered with reliability and expertise.



Cargo Damage

A damage and insurance survey was conducted on reefer containers carrying ginger, garlic, persimmons and apples. The inspection included verification of container conditions, temperature settings, and product quality. Physical assessment was carried out to identify any signs of damage, decay, or cold chain deviation. A detailed evaluation of affected quantities was performed based on visible condition. Findings were documented with photographic evidence to support claim assessment.

PROJECTS CORNER



Grab Inspection

Our team provides pre-inspection of grabs onboard vessels to ensure their condition and functionality meet operational and safety standards. This thorough inspection process assesses key components such as hydraulic systems, bucket integrity, and wear parts, identifying any maintenance needs

before they affect cargo handling operations, ensuring safety and efficiency in marine environments.



Calibration of Gas Meter

Calibration Engineers team specialize in the calibration of gas meters for marine applications. They ensure accurate gas flow measurements, critical for shipboard operations and regulatory compliance. Their expertise guarantees that gas meters perform reliably under marine conditions, adhering to international standards and safety protocols.

national standards and safety protocols.



Spare Supplies

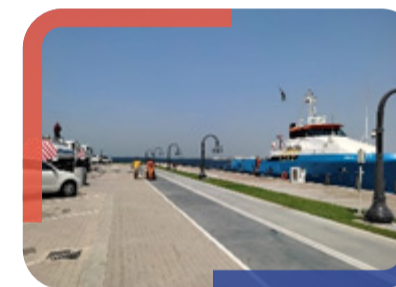
Reliable spare parts are essential for maintaining the operational efficiency of marine vessels and offshore equipment. Our team provides a comprehensive range of spare supplies, including critical components and replacement parts for various marine systems. Their parts meet industry standards,

ensuring the durability and performance of vessel equipment during operations.



Ship Chandling Supplies

Essential for seamless vessel operations, our ship chandling services deliver a comprehensive range of provisions, safety equipment, maintenance tools, and other operational essentials. These supplies ensure efficient onboard activities while maintaining full compliance with maritime regulations.



Fresh Water Supply at Doha Port

Fresh water supply operations were carried out seamlessly at Doha Port, ensuring timely delivery and uninterrupted vessel services. Quality checks were conducted to confirm water standards before supply.



Calibration Of torque Wrench

The calibration of torque wrenches, performed by Calibration Engineers, ensures accurate torque measurements for marine operations. This service guarantees that torque wrenches meet industry standards, which is crucial for secure and precise fastening during vessel maintenance, construction,

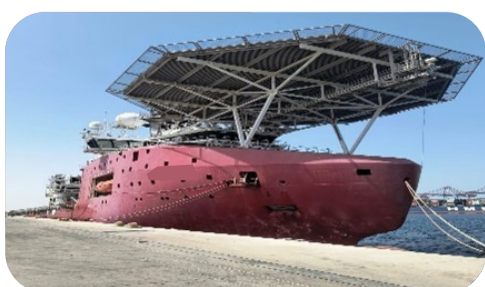
and offshore operations.



Calibration of Dew Point Meter

The team carried out the calibration of a dew point meter, performing accuracy checks and adjustments before delivering it back to the client for continued operational use.

OFFSHORE OPERATIONS



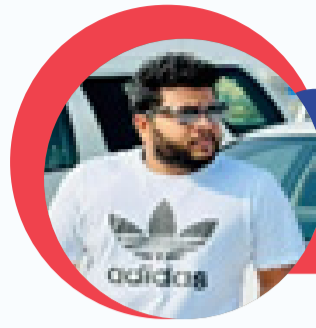
The Offshore Department recently completed a series of back-to-back OVID and suitability inspections for vessels being mobilized for a long-term project with a major oil and gas operator in Qatar. These inspections ensured compliance with client requirements and industry standards. Comprehensive gap analyses were conducted for various ASOGs, along with DP assurance activities across multiple projects to verify system reliability. Client representatives were also placed onboard vessels supporting ROV and diving operations for another major oil and gas operator. The offshore team remains ever-ready to support clients at short notice and deliver under tight, demanding schedules, reflecting their commitment to safety, quality, and operational excellence.

BIRTHDAY CHEERS - CELEBRATING OUR TEAM!



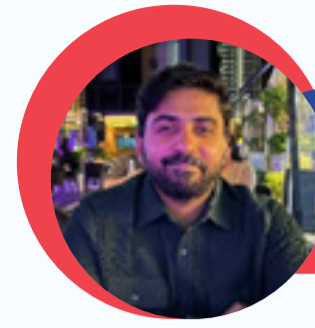
Sajid Basheer

10 February



Harison Thomas

28 February



Martin George

29 February

WORK ANNIVERSARIES



Suresh Karki

Completed 3 years of dedicated service since joining in 2023

Designation: Driver

Thank you and stay tuned for more updates as we continue to provide you with the highest quality service and support for all your logistics and surveying needs.

**Warm Regards,
CHM Global**

20
26